

# DC-AC INVERTER UNIT

**PS-DA0125-05(S) (4.5 W DUAL OUTPUTS)**

(PRELIMINARY INFORMATION)

**DESCRIPTION :**

This low profile DC to AC Inverter is developed for single or dual lamps.

**APPLICABLE LCD:**

3 to 12 inches single or dual lamp type  
 Lamp Voltage 400 ~ 900 Vrms  
 Lamp Current 5 ~ 10 mArms  
 Lamp Start Up Voltage 1.500 Vrms (Vin : 12 Vdc)

**FEATURES:**

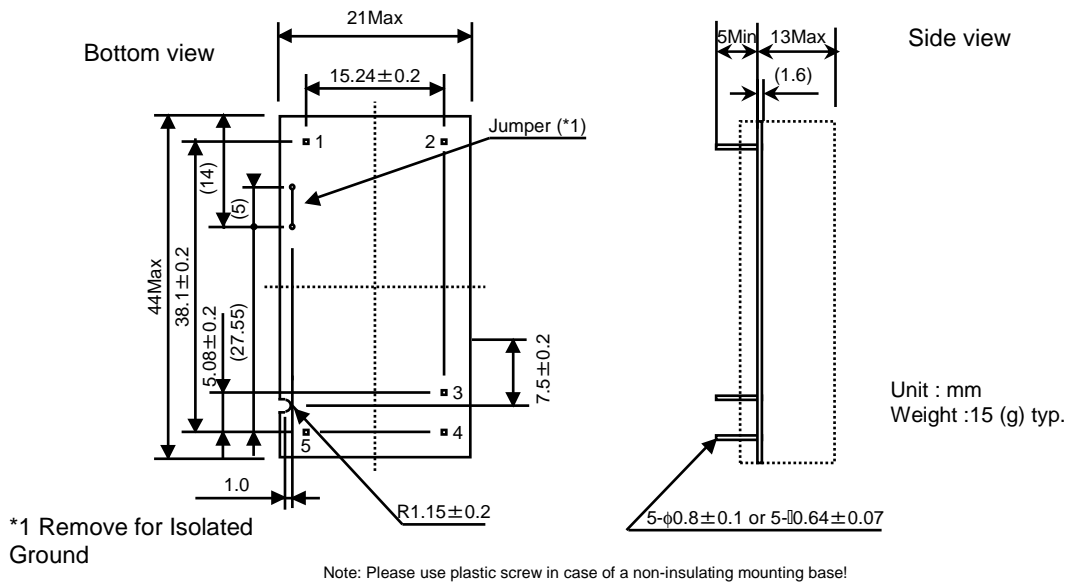
RoHS compliant (S)  
**4 different output conditions**



**TEMPERATURE & HUMIDITY :**

Operating Temperature Range -10°C ~ +60°C  
 Storage Temperature Range -20°C ~ +85°C  
 Humidity 95 %RH max

**DIMENSIONS :** L x B x H 44 x 21 x 15 mm



**Components**

No.	Part Description	Qty.	Material	Note
1	PCB	1	UL94V-0 (FR-4 or CEM-3)	t=1.6mm
2	Pin 1; 2	2	Pin Terminal	Input
3	Pin 3 ~ 5	3	Pin Terminal	Output

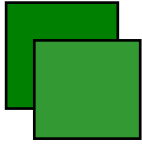
**Input side**

Pin No.	Symbols	Ratings
1	Vin	11.4 ~ 12.6 Vdc
2	GND	

**Power Systems – The Power Solution**

Web: [www.Power-Systems.de](http://www.Power-Systems.de)  
 Email: [Info@Power-Systems.de](mailto:Info@Power-Systems.de)

Address: Hauptstr. 48 ; 74360 Ilsfeld-Auenstein / Germany  
 Tel. : + 49 / 70 62 / 67 59 - 6  
 Fax: + 49 / 70 62 / 67 59 - 800



# DC-AC INVERTER UNIT

**PS-DA0125-05(S) (4.5 W DUAL OUTPUTS)**

(PRELIMINARY INFORMATION)

**ELECTRICAL CHARACTERISTICS :**

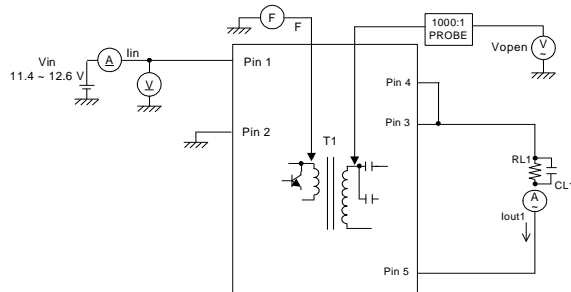
Parameters	Symbols	Conditions		Specification			Unit	Connexion
		Vin (V)	Tu (°C)	Min.	Typ.	Max.		
<b>Output Current</b>	lout	12±0.12	23±5	9.0	10.0	11.0	mArms	1
	lout	12±0.6	-10 ~ +60	8.0	10.0	12.0	mArms	
<b>Input Current</b>	lin	12±0.6	-10 ~ +60	-	0.32	0.48	Adc	
<b>Frequency</b>	F	12±0.6	-10 ~ +60	25	30	35	kHz	
<b>Open Circuit Voltage</b>	Vopen	12±0.6	-10 ~ +60	1.400	1.500	-	Vrms	
<b>Output Current</b>	lout	12±0.12	23±5	5.3	6.0	6.7	mArms	2
	lout	12±0.6	-10 ~ +60	4.7	6.0	7.3	mArms	
<b>Input Current</b>	lin	12±0.6	-10 ~ +60	-	0.2	0.3	Adc	
<b>Frequency</b>	F	12±0.6	-10 ~ +60	30	35	40	kHz	
<b>Open Circuit Voltage</b>	Vopen	12±0.6	-10 ~ +60	1.400	1.500	-	Vrms	
<b>Output Current</b>	lout	12±0.12	23±5	4.5	5.0	5.6	mArms	3
	lout	12±0.6	-10 ~ +60	4.0	5.0	6.1	mArms	
<b>Input Current</b>	lin	12±0.6	-10 ~ +60	-	0.18	0.27	Adc	
<b>Frequency</b>	F	12±0.6	-10 ~ +60	25	30	35	kHz	
<b>Open Circuit Voltage</b>	Vopen	12±0.6	-10 ~ +60	1.400	1.500	-	Vrms	
<b>Output Current</b>	lout	12±0.12	23±5	4.5	5.0	5.5	mArms	4
	lout	12±0.6	-10 ~ +60	4.0	5.0	6.0	mArms	
<b>Input Current</b>	lin	12±0.6	-10 ~ +60	-	0.32	0.48	Adc	
<b>Frequency</b>	F	12±0.6	-10 ~ +60	25	30	35	kHz	
<b>Open Circuit Voltage</b>	Vopen	12±0.6	-10 ~ +60	1.400	1.500	-	Vrms	

Note 1 : Please keep minimum of 2mm clearance (all directions) between inverter high voltage area as marked on mechanical drawing and any conductors.

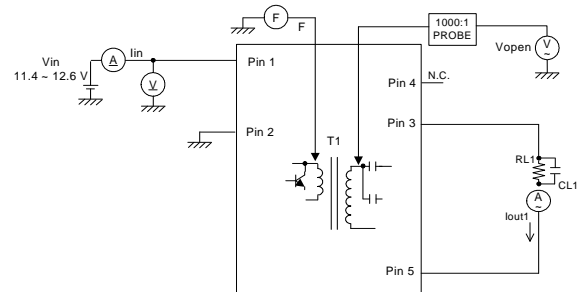
**Power Systems – The Power Solution**

Web: [www.Power-Systems.de](http://www.Power-Systems.de)  
 Email: [Info@Power-Systems.de](mailto:Info@Power-Systems.de)

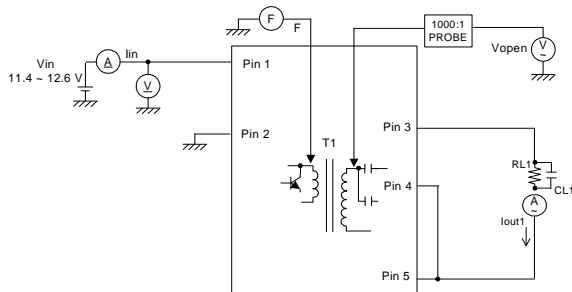
Address: Hauptstr. 48 ; 74360 Ilsfeld-Auenstein / Germany  
 Tel. : + 49 / 70 62 / 67 59 - 6  
 Fax: + 49 / 70 62 / 67 59 - 800

**TEST CIRCUIT :**

**Output side Connection 1**

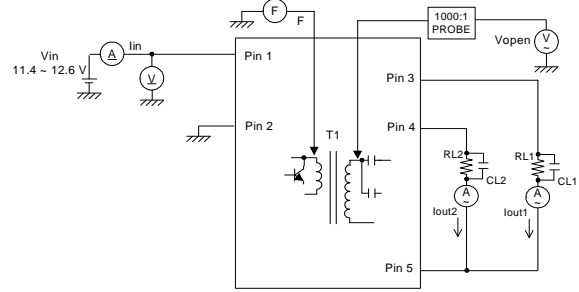
Pin No.	Symbols	Ratings
3	Vhigh	450 Vrms (10 mArms)
4	Vhigh	
5	Vlow	(GND)


**Output side Connection 2**

Pin No.	Symbols	Ratings
3	Vhigh	750 Vrms (6 mArms)
4	N.C.	
5	Vlow	(GND)


**Output side Connection 3**

Pin No.	Symbols	Ratings
3	Vhigh	900 Vrms (5 mArms)
4	N.C.	
5	Vlow	(GND)


**Output side Connection 4**

Pin No.	Symbols	Ratings
3	Vhigh	450 Vrms (5 mArms)
4	Vhigh	450 Vrms (5 mArms)
5	Vlow	(GND)

**Power Systems – The Power Solution**

Web: [www.Power-Systems.de](http://www.Power-Systems.de)  
 Email: [Info@Power-Systems.de](mailto:Info@Power-Systems.de)

Address: Hauptstr. 48 ; 74360 Ilsfeld-Auenstein / Germany  
 Tel. : + 49 / 70 62 / 67 59 - 6  
 Fax: + 49 / 70 62 / 67 59 - 800