

DC-AC INVERTER UNIT

PS-DA0125-02(S) (4.5 W DUAL OUTPUTS)

(PRELIMINARY INFORMATION)

DESCRIPTION :

This low profile DC to AC Inverter is developed for single lamps.

APPLICABLE LCD:

- 3.8 to 15 inches single lamp type
- Lamp Voltage 900 Vrms
- Lamp Current 5 mArms
- Lamp Start Up Voltage 900 Vrms (Vin : 5 Vdc)

FEATURES :

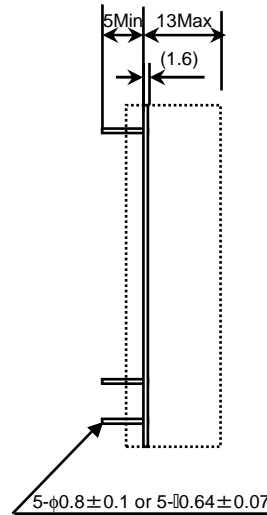
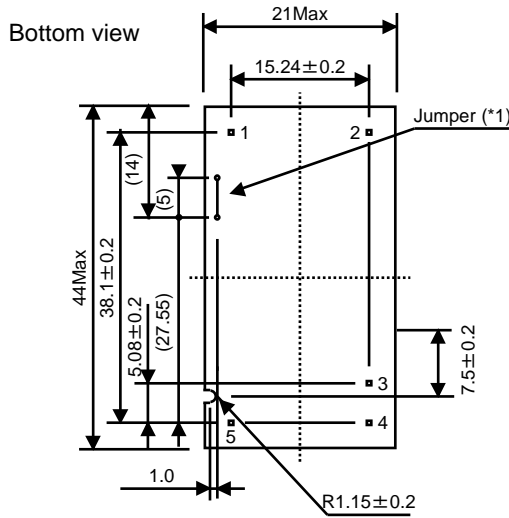
- RoHS compliant (S)
- 4 different output conditions**

TEMPERATURE & HUMIDITY :

- Operating Temperature Range -10°C ~ +60°C
- Storage Temperature Range -20°C ~ +85°C
- Humidity 95 %RH max



DIMENSIONS : L x B x H **44 x 21 x 15 mm**



Side view

Unit : mm
Weight :15 (g) typ.

*1 Remove for Isolated Ground

Note: Please use plastic screw in case of a non-insulating mounting base!

Components

No.	Part Description	Qty.	Material	Note
1	PCB	1	UL94V-0 (FR-4 or CEM-3)	t=1.6mm
2	Pin 1; 2	2	Pin Terminal	Input
3	Pin 3 ~ 5	3	Pin Terminal	Output

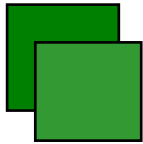
Input side

Pin No.	Symbols	Ratings
1	Vin	4.75 ~ 5.25 Vdc
2	GND	-

Power Systems – The Power Solution

Web: www.Power-Systems.de
Email: Info@Power-Systems.de

Address: Hauptstr. 48 ; 74360 Ilsfeld-Auenstein / Germany
Tel. : + 49 / 70 62 / 67 59 - 6
Fax: + 49 / 70 62 / 67 59 - 800



DC-AC INVERTER UNIT

PS-DA0125-02(S) (4.5 W DUAL OUTPUTS)

(PRELIMINARY INFORMATION)

ELECTRICAL CHARACTERISTICS :

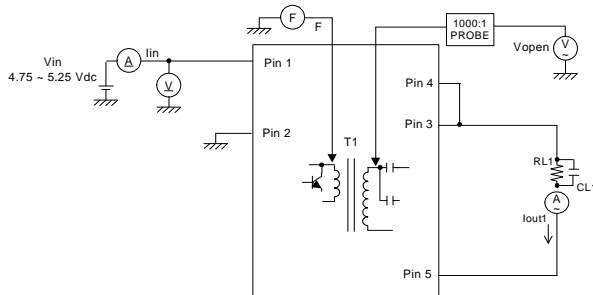
Parameters	Symbols	Conditions		Specification			Unit	Connention
		Vin (V)	Tu (°C)	Min.	Typ.	Max.		
Output Current	lout	5±0.05	23±5	9.0	10.0	11.0	mArms	1
	lout	5±0.25	-10 ~ +60	8.0	10.0	12.0	mArms	
Input Current	lin	5±0.25	-10 ~ +60	-	0.8	1.2	Adc	
Frequency	F	5±0.25	-10 ~ +60	25	30	35	kHz	
Open Circuit Voltage	Vopen	5±0.25	-10 ~ +60	800	900	-	Vrms	
Output Current	lout	5±0.05	23±5	5.2	6.0	6.6	mArms	2
	lout	5±0.25	-10 ~ +60	4.6	6.0	7.2	mArms	
Input Current	lin	5±0.25	-10 ~ +60	-	0.51	0.77	Adc	
Frequency	F	5±0.25	-10 ~ +60	30	35	40	kHz	
Open Circuit Voltage	Vopen	5±0.25	-10 ~ +60	800	900	-	Vrms	
Output Current	lout	5±0.05	23±5	4.5	5.0	5.6	mArms	3
	lout	5±0.25	-10 ~ +60	4.0	5.0	6.1	mArms	
Input Current	lin	5±0.25	-10 ~ +60	-	0.45	0.68	Adc	
Frequency	F	5±0.25	-10 ~ +60	25	30	35	kHz	
Open Circuit Voltage	Vopen	5±0.25	-10 ~ +60	800	900	-	Vrms	
Output Current	lout	5±0.05	23±5	4.5	5.0	5.5	mArms	4
	lout	5±0.25	-10 ~ +60	4.0	5.0	6.0	mArms	
Input Current	lin	5±0.25	-10 ~ +60	-	0.8	1.2	Adc	
Frequency	F	5±0.25	-10 ~ +60	25	30	35	kHz	
Open Circuit Voltage	Vopen	5±0.25	-10 ~ +60	800	900	-	Vrms	

Note 1 : Please keep minimum of 2mm clearance (all directions) between inverter high voltage area as marked on mechanical drawing and any conductors.

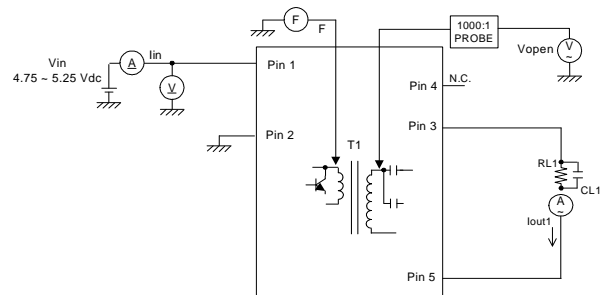
Power Systems – The Power Solution

Web: www.Power-Systems.de
 Email: Info@Power-Systems.de

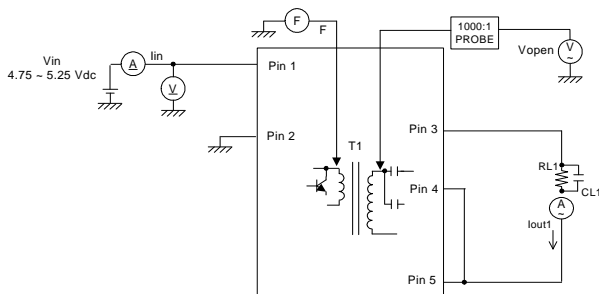
Address: Hauptstr. 48 ; 74360 Ilsfeld-Auenstein / Germany
 Tel. : + 49 / 70 62 / 67 59 - 6
 Fax: + 49 / 70 62 / 67 59 - 800

TEST CIRCUIT :

Output side Connection 1

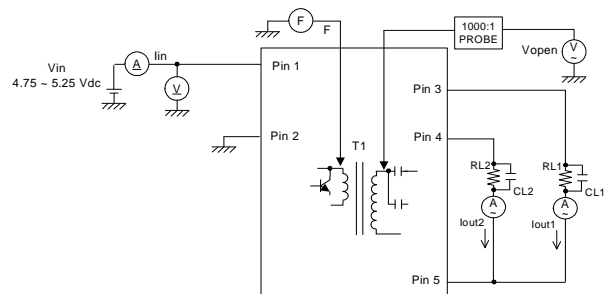
Pin No.	Symbols	Ratings
3	Vhigh	450 Vrms (10 mArms)
4	Vhigh	
5	Vlow	(GND)


Output side Connection 2

Pin No.	Symbols	Ratings
3	Vhigh	750 Vrms (6 mArms)
4	N.C.	
5	Vlow	(GND)


Output side Connection 3

Pin No.	Symbols	Ratings
3	Vhigh	900 Vrms (5 mArms)
4	N.C.	
5	Vlow	(GND)


Output side Connection 4

Pin No.	Symbols	Ratings
3	Vhigh	450 Vrms (5 mArms)
4	Vhigh	450 Vrms (5 mArms)
5	Vlow	(GND)

Power Systems – The Power Solution

Web: www.Power-Systems.de
 Email: Info@Power-Systems.de

Address: Hauptstr. 48 ; 74360 Ilsfeld-Auenstein / Germany
 Tel. : + 49 / 70 62 / 67 59 - 6
 Fax: + 49 / 70 62 / 67 59 - 800